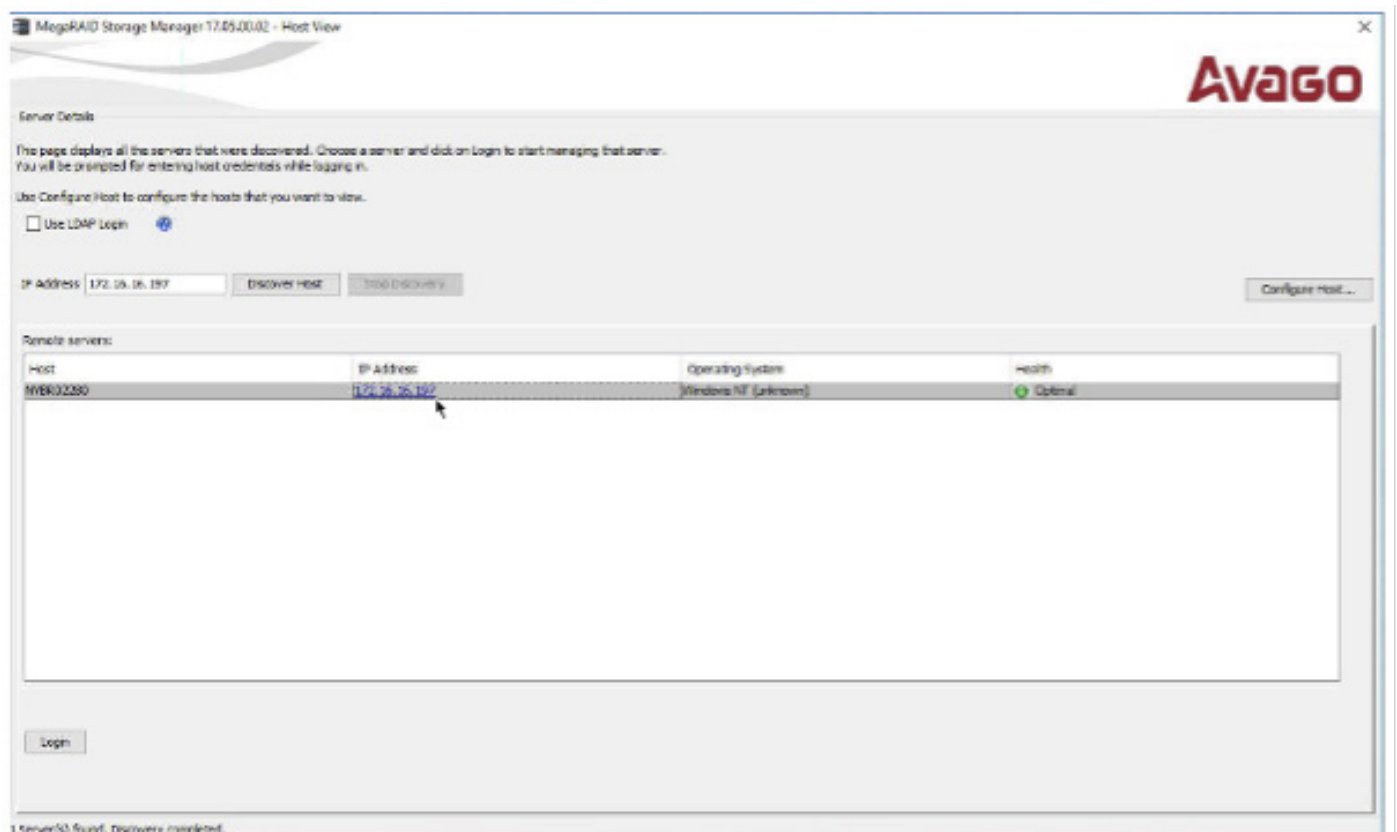


# MegaRAID Setup

## RAID 5

To begin setting up a RAID in MegaRAID Storage Manager, you will first need to open the software:

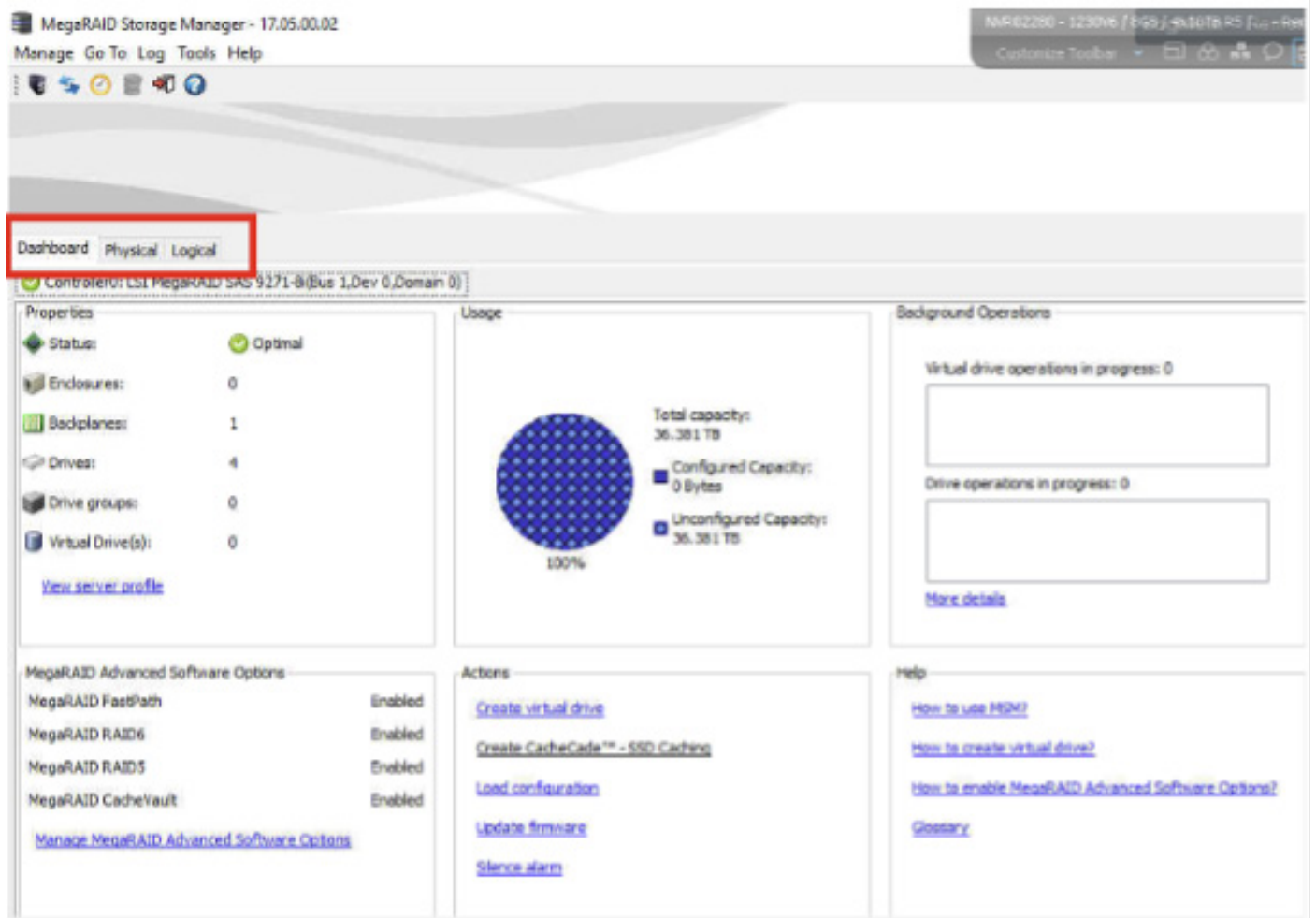
Double click the icon on the desktop, when opening for the first time you will be greeted with the following screen:



It may take some time to load and find your local NVR, you can also change the IP Address to 127.0.0.1, which will speed up this process.

Once it has loaded, double click the IP Address highlighted blue, and enter the Windows Username and Password. MegaRAID will fully load after correct input.

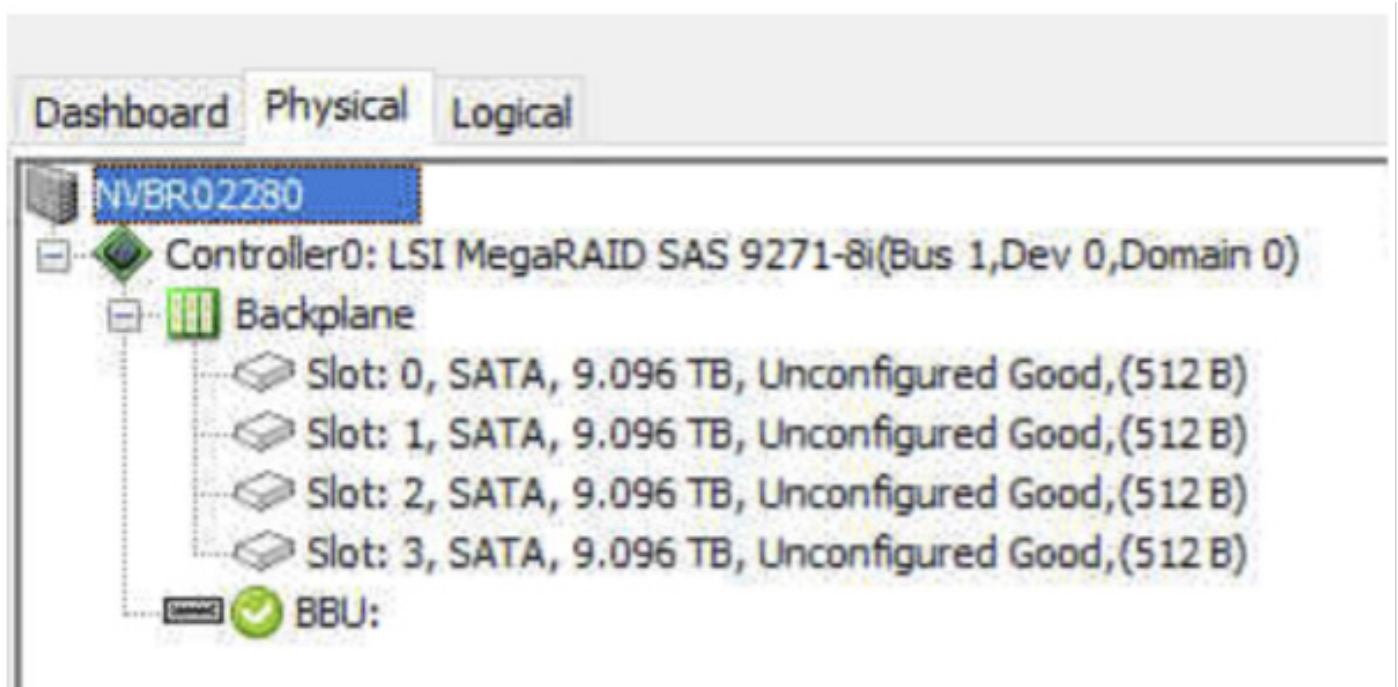
When loaded, you will see its main menu:



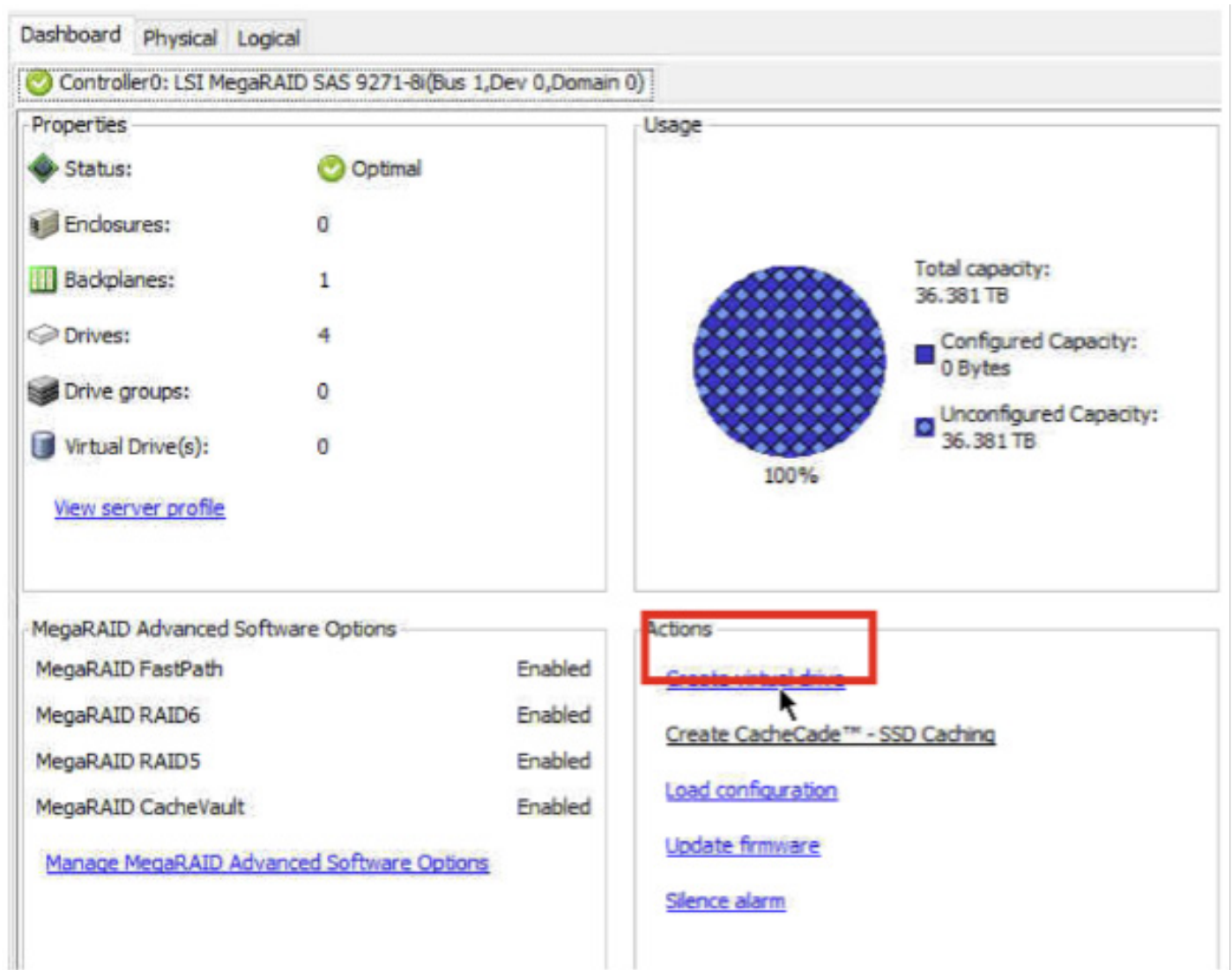
There are a lot of options, but we will only be using one, so don't worry about all of the others.

Firstly, confirm your drives are in the correct configuration before proceeding. You can do this by heading over to the **Physical** tab in the top left outlined by the red rectangle.

When in the **Physical** tab, your drives should look like this:



Once confirmed, head back to **Dashboard** and select "**Create Virtual Drive**", depicted by the red rectangle in the below picture.



Dashboard Physical Logical

Controller0: LSI MegaRAID SAS 9271-8i(Bus 1,Dev 0,Domain 0)

**Properties**

- Status: Optimal
- Enclosures: 0
- Backplanes: 1
- Drives: 4
- Drive groups: 0
- Virtual Drive(s): 0

[View server profile](#)

**Usage**

100%

Total capacity: 36.381 TB

- Configured Capacity: 0 Bytes
- Unconfigured Capacity: 36.381 TB

**MegaRAID Advanced Software Options**

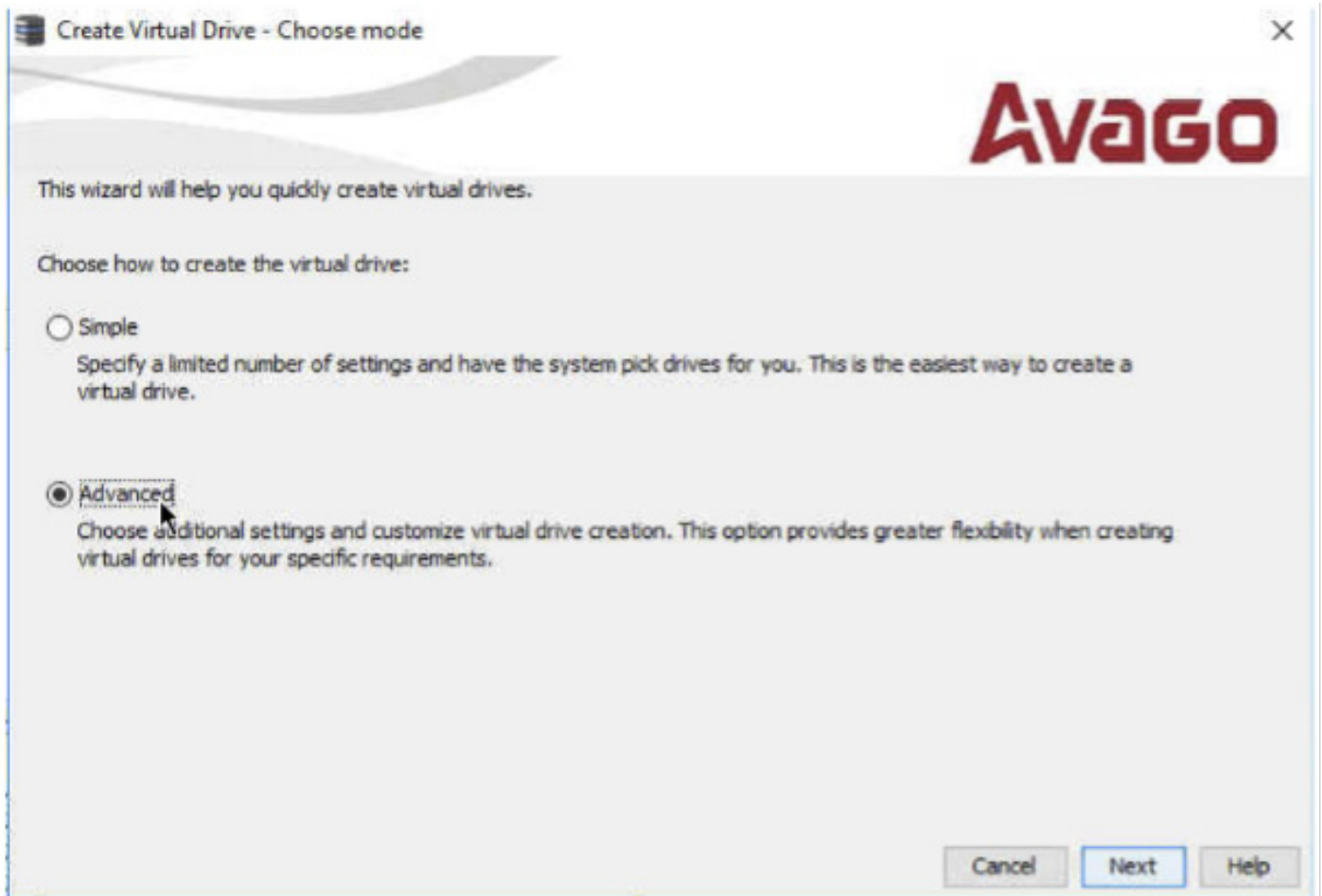
- MegaRAID FastPath: Enabled
- MegaRAID RAID6: Enabled
- MegaRAID RAID5: Enabled
- MegaRAID CacheVault: Enabled

[Manage MegaRAID Advanced Software Options](#)

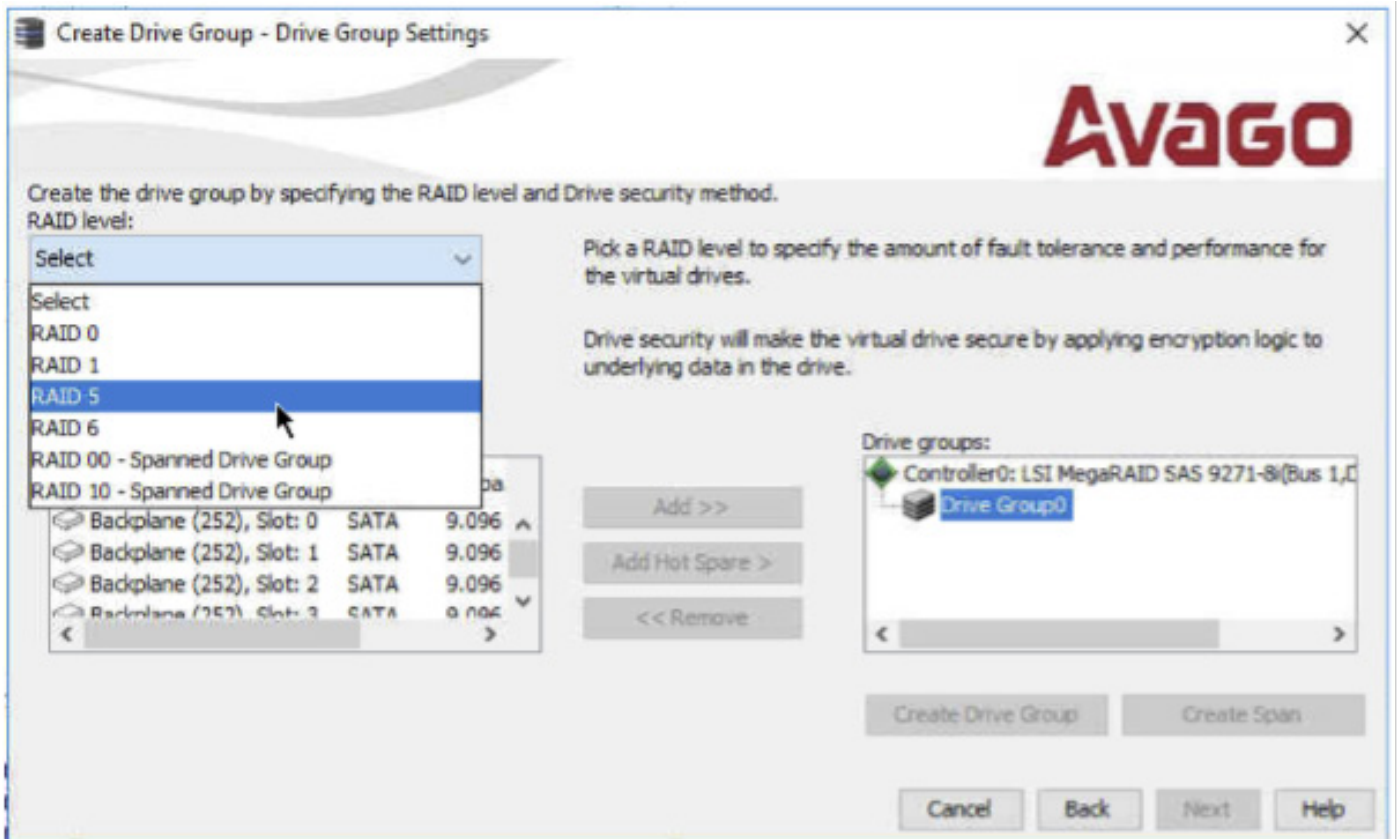
**Actions**

- [Create virtual drive](#)
- [Create CacheCade™ - SSD Caching](#)
- [Load configuration](#)
- [Update firmware](#)
- [Silence alarm](#)

You will now be greeted with the menu. Select the **Advanced** radio button and click next.



You should now see the following interface, select RAID Level 5 firstly:




Once you have selected RAID 5, **highlight and select all drives** in the left-hand box and click **Add** to add them to the controller on the right



**Create Drive Group - Drive Group Settings**

Create the drive group by specifying the RAID level and Drive security method.

RAID level:  
 RAID 5  This RAID level is suitable for multi-user environments(database or file system) with large IO size and high proportion of read activity.

Drive security method:  
 Select Drive security will make the virtual drive secure by applying encryption logic to underlying data in the drive.

Select unconfigured drives:

Drive	Type	Capa
Backplane (252), Slot: 0	SATA	9.096
Backplane (252), Slot: 1	SATA	9.096
Backplane (252), Slot: 2	SATA	9.096
Backplane (252), Slot: 3	SATA	9.096

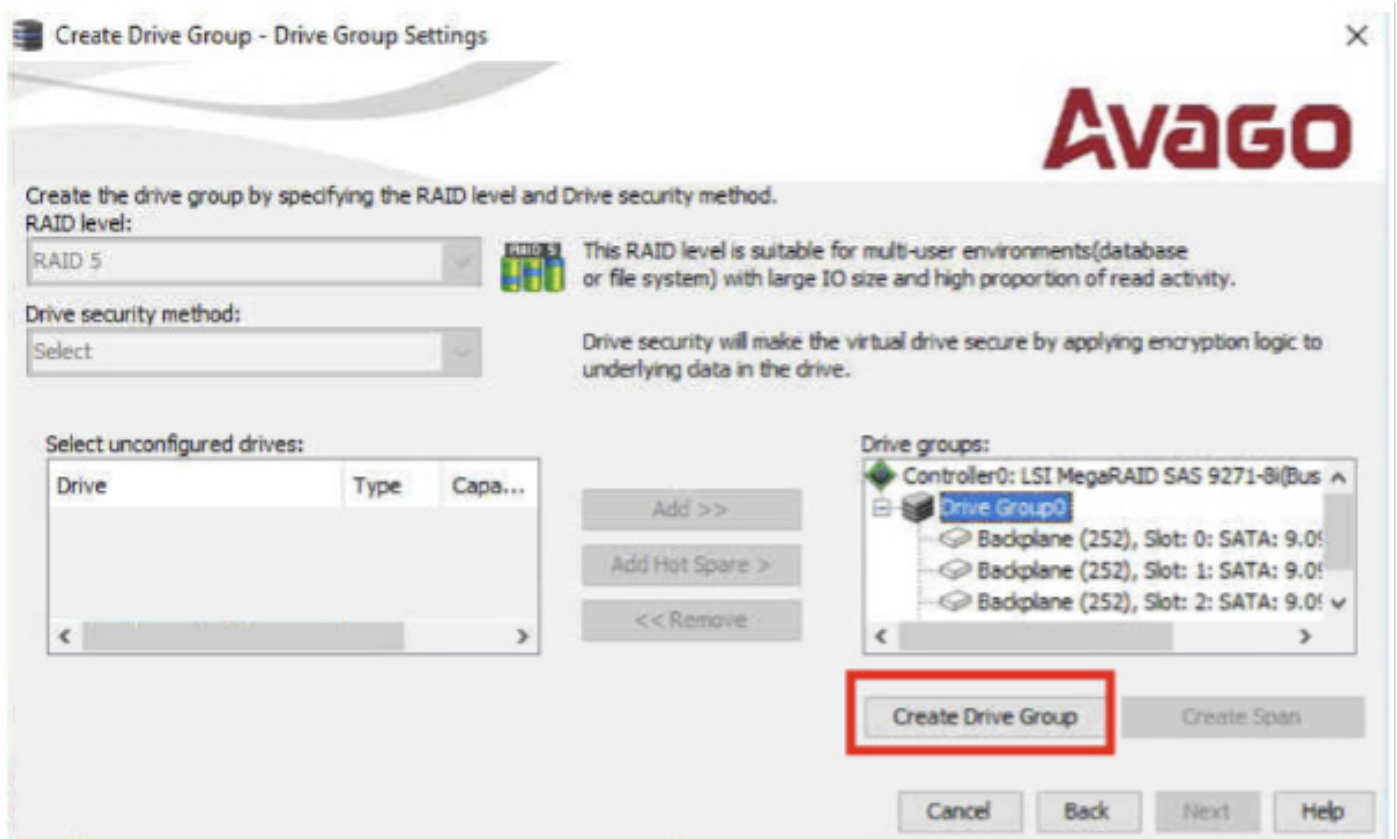
Drive groups:

Controller0: LSI MegaRAID SAS 9271-8i(Bus 1,0)

Drive Group0

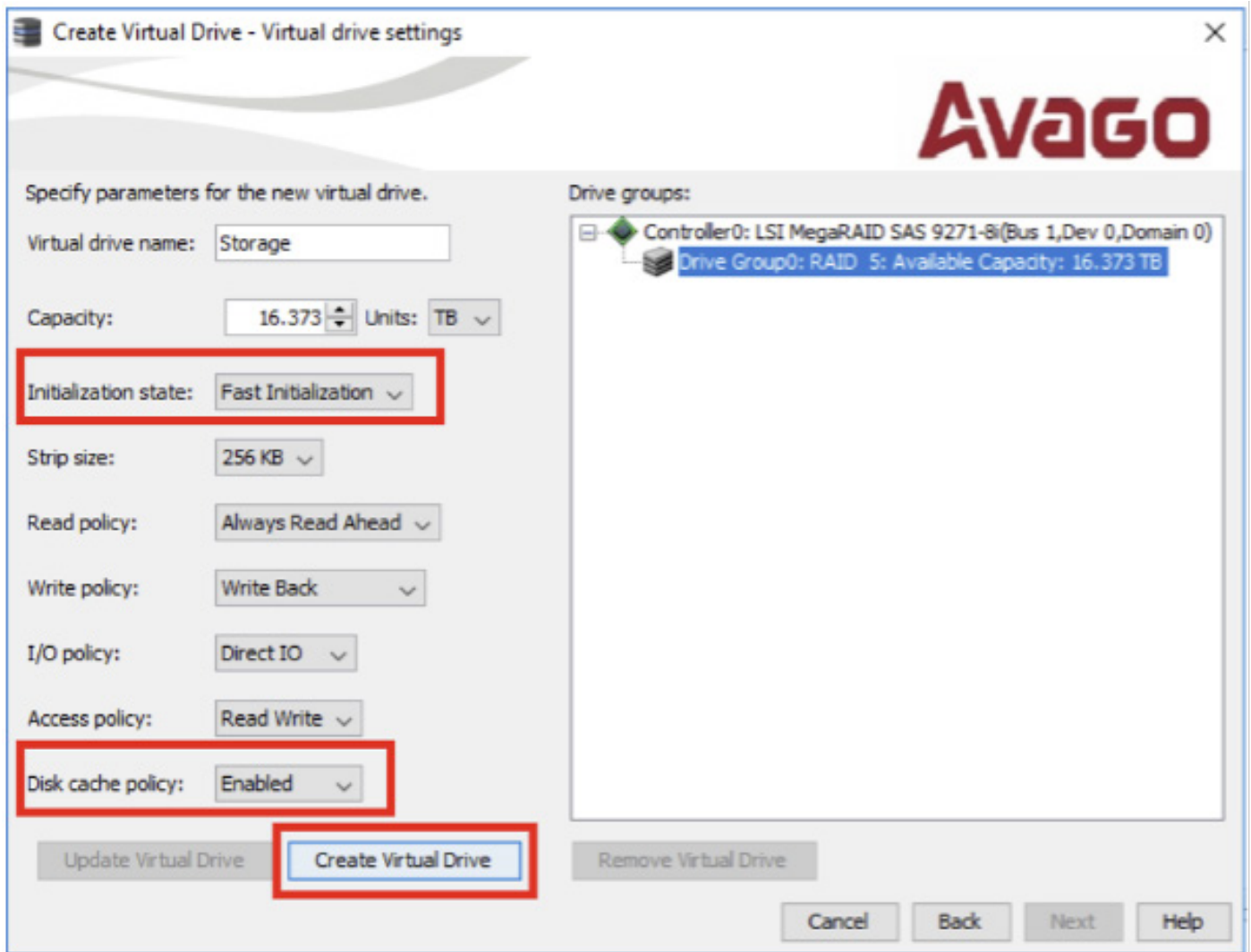


When they have been added, click **"Create Drive Group"**



After making the drive group, click next.





Avago

Create Virtual Drive - Virtual drive settings

Specify parameters for the new virtual drive.

Virtual drive name:

Capacity:  Units:

Initialization state:

Strip size:

Read policy:

Write policy:

I/O policy:

Access policy:

Disk cache policy:

Drive groups:

Controller0: LSI MegaRAID SAS 9271-8i(Bus 1,Dev 0,Domain 0)

Drive Group0: RAID 5: Available Capacity: 16.373 TB

Update Virtual Drive Create Virtual Drive Remove Virtual Drive

Cancel Back Next Help

Here are the options to select here:

- Capacity: Leave default
- Initialisation state: Fast initialization
- Read Policy: Leave default
- Write Policy: Leave default
- I/O Policy: Leave Default
- Access Policy: Leave Default
- Disk cache policy: Select **Enabled**

Once the options are selected, click "Create Virtual Drive" > Next > Finish

Congratulations, you have created a RAID 5 Array!

#### Disclaimer

These are specific instructions only for a RAID 5 array. Any other RAID type will have a specific setup.